



187 Brindle Road, Bamber Bridge, Preston, PR5 6YL
£224,950

GROUND FLOOR

Lounge 15'3" x 12'2" (4.66m x 3.73m)

Carpet flooring with spotlighting, blind and log burner

Kitchen/diner 6'11" x 17'8" (2.11m x 5.40m)

High quality wood effect laminate flooring with patio doors leading to the rear garden. A range of fitted kitchen units, worktops and integrated kitchen appliances, including oven, hob, hood and fridge

Bedroom 9'4" x 10'11" (2.86m x 3.33m)

Carpet flooring with window to the front of the property and blind

Bathroom

High quality vinyl flooring with 3 piece bathroom suite in white, shower over bath and tiled decor

FIRST FLOOR

Bedroom 6'8" x 9'3" (2.04m x 2.84m)

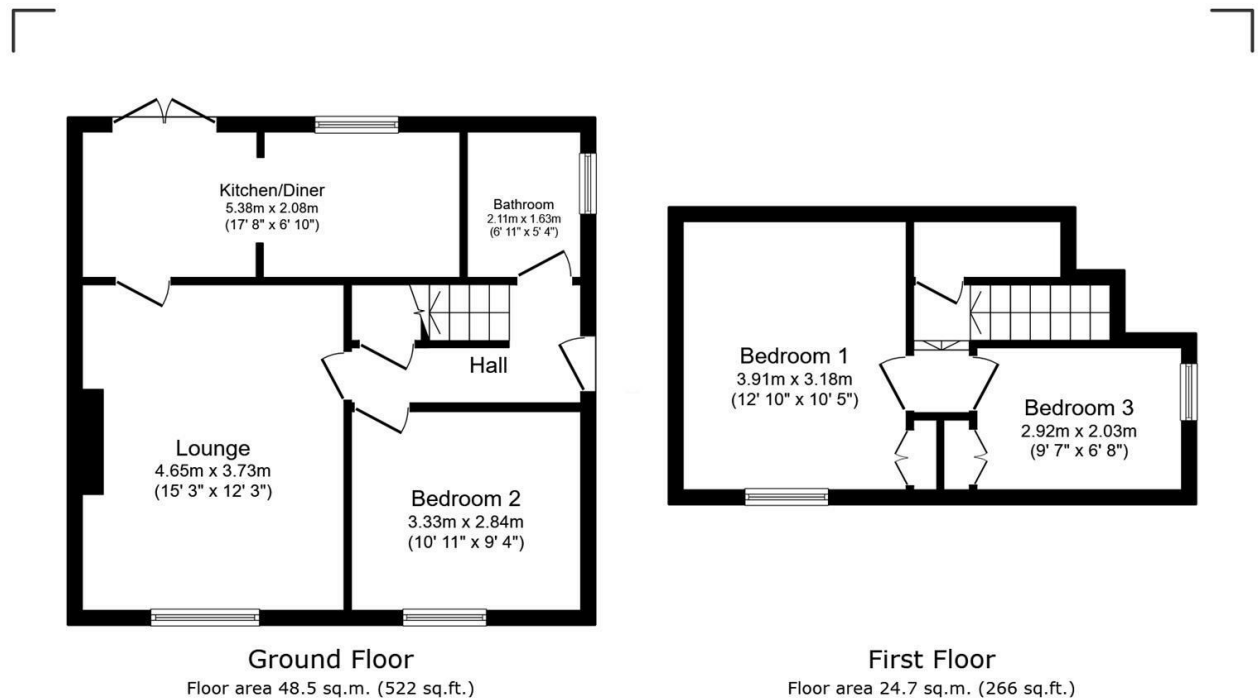
Carpet flooring with window to the side elevation and blind

Bedroom 10'0" x 12'10" (3.06m x 3.92m)

Carpet flooring with window to the front elevation, curtains and fitted wardrobes

EXTERNAL

Large driveway to the front of the property, capable of accommodating 2 vehicles, with access down the side of the property leading to a detached single garage. Landscaped rear garden, enclosed by panel fencing with artificial lawn and decking area.



Total floor area: 73.2 sq.m. (788 sq.ft.)

This floor plan is for illustrative purposes only. It is not drawn to scale. Any measurements, floor areas (including any total floor area), openings and orientations are approximate. No details are guaranteed, they cannot be relied upon for any purpose and do not form any part of any agreement. No liability is taken for any error, omission or misstatement. A party must rely upon its own inspection(s). Powered by www.PropertyBox.io